

Summer **OUTDOOR** ACTIVITIES PACKAGE

June - September 2023

Fassa
Sport
Partner

Monday



GET READY FOR A MOUNTAIN EXCURSION!

with Territorial Guides (from 5/06 to 25/09)

Our Guides will teach us everything we need to know before tackling an excursion in the mountains. During an easy walk starting from the various villages of the valley, we will reach panoramic points. We will talk about how to prepare the backpack, how to evaluate the right excursion for us, how to consult the weather and how to plan an excursion without forgetting the respect for the environment that surrounds us.



🕒 9.00 - 12.30 or 14.00 - 17.30 ⬆️⬆️ max 200 m Difficulty: ★☆☆☆☆

👤 8 +

📍 9.00 Tourist Information office Moena - Vigo - Canazei
14.00 Tourist Information office Soraga - Pozza - Campitello

€ FREE for Val di Fassa Guest Card owners and Summer Outdoor guests.



HIKING TOWARDS PORDOI

with Territorial Guides (from 12/06 to 11/09)

Panoramic excursion where we will both walk and use lifts/buses to support alternative mobility. We will reach the famous Terrace of the Dolomites where we can stop and enjoy our packed lunch with a view that will leave us breathless!



🕒 8.30 - 15.30 ⬆️ 300 m ⬆️ 400 m Difficulty: ★★☆☆☆

👤 8 +

📍 8.30 bus station Marconi square Canazei / 9.10 Sass Pordoi cable car station ticket office

€ 34€ adults, 17€ children | Summer Outdoor 20€ adults, 10€ children.



MY FIRST VIA FERRATA with Mountain Guides

(from 5/06 to 25/09)

A unique experience to experience the thrill of conquering the summit! The Mountain Guides will lead and teach you the right approach to the via ferrata, starting from the easiest and most panoramic of the valley.



🕒 8.00 - 16.00 ⬆️⬆️ 700 m Difficulty: ★★☆☆☆

👤 12 +

📍 8.00 Paolina chairlift P. Costalunga / Costabella chairlift P. San Pellegrino

€ 100€ | Summer Outdoor 70€



MTB TEST DAY FOR CHILDREN AND YOUNGSTERS with MTB instructors

(from 5/06 to 25/09)

Test day at the Skillpark in Canazei or Soraga. Have fun with our instructors experiencing jumps, boardwalks and parabolics! Children and youngsters can decide to take part in the weekly MTB courses.



🕒 9.00 - 12.00 Difficulty: ★☆☆☆☆

👤 6 +

📍 9.00 Canazei Marmolada ski school parking lot / 9.00 Soraga playground parking lot

€ 25€ | 15€ Summer Outdoor | FREE Bike Hotel



MTB TEST TOUR ADULTS with MTB instructors

(from 5/06 to 25/09)

Easy/intermediate MTB excursion along forest roads and single tracks with MTB instructors, who will evaluate your skills and suggest you the most appropriate excursion to do during the week.



🕒 9.00 - 12.00 Difficulty: ★★☆☆☆

👤 14 +

📍 9.00 Canazei Marmolada ski school parking lot / 9.00 Soraga playground parking lot

€ 25€ | 15€ Summer Outdoor | FREE Bike Hotel



Tuesday



AROUND SASSOLUNGO TREKKING with Territorial Guides

(from 13/06 to 12/09). Exciting high-altitude excursion to discover the Sassolungo Group. From Passo Sella with the lift (two-pax gondola) we will reach the highest point, the Forcella and the Demetz refuge at an altitude of 2,685m. In the middle of majestic vertical rock walls, our adventure will begin.



⌚ 8.30 - 15.30 about ↑ 250 m ↓ 700 m Difficulty: ★★☆☆☆ 👤 10 +

📍 8:30 roundabout bus stop at the end of Canazei / 9:00 Sassolungo gondola at Passo Sella

€ 34€ adults, 17€ children | Summer Outdoor 20€ adults, 10€ children



every other week



PANORAMIC CROSSING with Territorial Guides

(from 13/06 to 12/09) Do you want to enjoy a breathtaking panorama of infinite beauty? Then jump aboard! We will go up comfortably with the lifts in the splendid Ciampac basin where we will begin our beautiful high-altitude crossing.



⌚ 8.30 - 15.30 about ↑ 400 m ↓ 200 m Difficulty: ★★☆☆☆ 👤 10 +

📍 8:30 Alba di Canazei at the cash desk of Ciampac gondola

€ 34€ adults, 17€ children | Summer Outdoor 20€ adults, 10€ children



CLIMBING APPROACH FOR ADULTS and CHILDREN

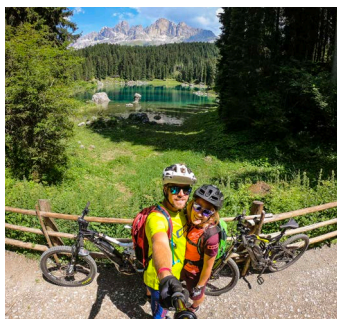
(from June to September) with Mountain Guides. Live an experience together with the Mountain Guides to learn the basics of rock climbing. A whole day on outdoor crags with lunch break (packed lunch or at the nearby refuges). Whoever wants to, can then continue with the 3 or 5-day weekly climbing course.



⌚ 9.00 - 15.30 about Difficulty: ★☆☆☆☆ Children's course: 👤 7-13

📍 9.00 parking roundabout Canazei / Piazza de San Nicolò in Pozza

€ Adult course: €100 | 70€ Summer Outdoor
Children's course: 70€ | €50 Summer Outdoors



LATEMAR MTB TOUR on E-BIKE with MTB instructors

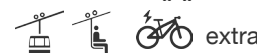
(from 13/06 to 12/09) We will ride on the cycle route to Predazzo where we will take two consecutive lifts up to Passo Feudo. Riding along paths in the forest towards Obereggen we will get to the enchanting Lake Carezza and then climb up to Costalunga Pass.



⌚ 8.30 - 16.00 ↑ 450 m ↓ 1550 → 39 km Difficulty: ★★☆☆☆ 👤 12 +

📍 8.30 Check Point Canazei / 9.00 Check Point Pozza / 9.30 Check Point Moena

€ 45€ | 20€ Summer Outdoor and Bike Hotel



Wednesday



EXCURSION WITH PICNIC IN A REAL MOUNTAIN LODGE

with Territorial Guides (from 21/06 to 13/09) Easy and regenerating excursion in the peace of Val San Nicolò. Walking through alternative hidden paths we will visit the sources of the waterfalls. After a typical aperitif in the mountain lodge, we will relax and enjoy our picnic before returning to the valley.



⌚ 8.30 - 16.00 ↑↓ 300 m Difficulty: ★★☆☆☆ 👤 8 +

📍 8.30 Sport Check Point Pozza di Fassa

€ 45€ adults, 30€ children | Summer Outdoor 35€ adults e 20€ children



WITH HEADLAMPS IN THE TRENCHES OF PADON

with Mountain Guides (from 15/06 to 16/09)

Full-day excursion to explore the tunnels of the Padon area with the headlamps, we will walk among the trenches of World War I with a breathtaking view of Marmolada glacier.



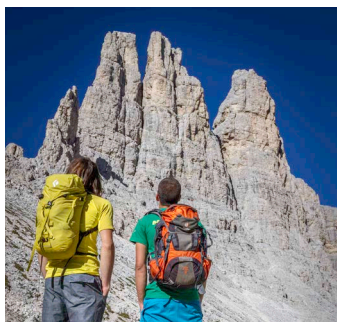
⌚ 9.15 - 16.00 ↑↓ 300 m Difficulty: ★★☆☆☆ 👤 8 +

📍 9.15 Padon chairlift station (Capanna Bill)

€ 40€ adults, 25€ children | Summer Outdoor 25€ adults, 10€ children



Wednesday



AT THE FOOT OF TORRI DEL VAJOLET – RIFUGIO RE ALBERTO

with Mountain Guides (from 14/06 to 13/09)

They are the most famous, the most photographed, the most desired...the Vajolet Towers! Today you have the chance to reach them accompanied by a mountain guide, who will tell you about the secrets of these magnificent peaks.



⌚ 8.00 - 16.00

↕ 700 m

Difficulty: ★★★★★☆

👤 12 +

📍 8.00 ticket office Ciampedie - Catinaccio cable car in Vigo di Fassa

€ 40€ | Summer Outdoor 25€



AGRI-TOUR ON E-BIKE with MTB instructors (from 07/06 to 27/09)

Lovely e-bike excursion on the cycle route and forest roads to discover the flavors and traditions of the valley. During the day we will stop in the most famous farmhouses where we will taste their typical products for lunch and snacks.



⌚ 9.00 - 15.30 circa

↕ 250 m

→ 30 km

Difficulty: ★★☆☆☆☆

👤 everybody

📍 9.00 Sport Check Point Canazei o Moena

€ 60€ adults, 35€ children | Bike Hotel & Summer Outdoor 35€ adults and children
Including lunch and tastings.



Thursday



ON THE CHAMOIS' TRAIL

with Territorial Guides (from 22/06 to 14/09)

From Alba we will reach the beautiful Ciampac basin by cable car. We will venture on paths beaten only by animals to discover the wood and its secrets. A circular route that will bring us back to town.



⌚ 9.00 - 15.30

↑ 200 m

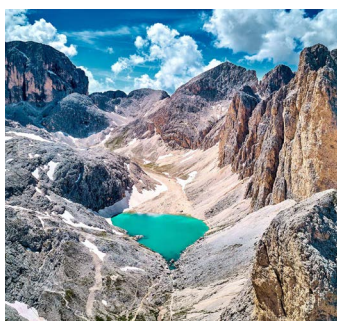
↓ 700 m

Difficulty: ★★★★★☆

👤 10 +

📍 9.00 Ciampac cable car station in Alba di Canazei

€ 34€ adults, 17€ children | Summer Outdoor 20€ adults, 10€ children



LAKE ANTERMOIA with Territorial Guides (from 08/06 to 28/09)

Excursion to discover the famous heart-shaped lake nestled in Catinaccio d'Antermoia mountains. It is quite a demanding excursion, but we will make it a little easier by reaching Val Duron by off-road taxi.



⌚ 7.00 - 16.00

↑ 700 m

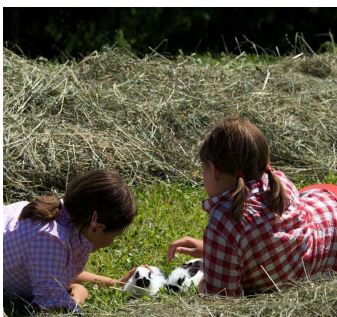
↓ 1000 m

Difficulty: ★★★★★★

👤 12 +

📍 7.00 Sport Check Point Campitello

€ 40€ | Summer Outdoor 25€



MORNING AT THE FARM (from 15/06 to 31/08)

Starting from Vigo di Fassa we will reach the scenic village of Tamion and the tiny Agritur Weiss farm. We will spend the morning with Monica who will introduce us to her animals: chickens, geese, rabbits, horses, donkeys, cows and pigs; we will also have the chance to see the cow-milking!



⌚ 9.40 - 13.00

Difficulty: ★☆☆☆☆

👤 everybody

📍 9.40 Sport Check Point Vigo / 10.00 Tamion Agritur Weiss

€ 25€ adults, 15€ children | Summer Outdoor 15€ adults, 5€ children



HIGH ALTITUDE BREAKFAST ON E-BIKE with MTB instructors

(from 15/06 to 14/09) A unique experience to enjoy the peace and silence of the woods in the early morning. While pedaling we will be able to admire the colors of the mountains and breathe the fresh air in the silence of nature. Once we reach Ciampedie we will enjoy a delicious breakfast in front of the magnificent Catinaccio group before returning to the valley and starting our day.



⌚ 6.30 - 9.30 about

↕ 600 m

Difficulty: ★★★★★☆

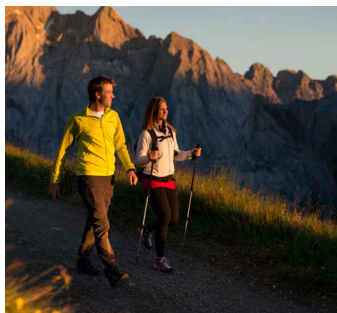
👤 12 +

📍 6.30 Sport Check Point Vigo di Fassa.

€ 45€ | Summer Outdoor 35€. Rich breakfast at high altitude included.



Friday



THE MAGIC OF SUNSET at Passo Costalunga

with Territorial Guides (from 05/06 to 25/09)

Evening excursion at sunset to enjoy the last rays of the sun that color the Dolomites red. An easy walk of about 45 minutes will take us to the Baita Majarè where a small evening refreshment awaits us.

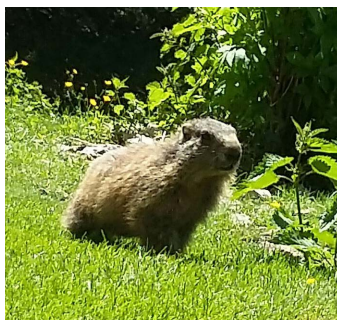
🕒 18.30 - 21.30 about ⬆️ 200 m ⬆️ 200 m Difficulty: ★★☆☆☆



👤 8 +

📍 Depends on the period: 18.30 - 19.30 at the Golf Hotel Passo Costalunga parking lot.

€ 40€ adults, 25€ children | Summer Outdoor 25€ adults, 10€ children



THE CITY OF MARMOTS with Territorial Guides

Ascent with the Costabella chairlift at San Pellegrino pass followed by an easy excursion to observe these funny high mountain inhabitants. If you pay attention you will hear their whistles.

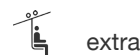
🕒 14.00 - 17.00 ⬆️ 50m Difficulty: ★☆☆☆☆



👤 everybody

📍 14.00 Costabella chairlift station at San Pellegrino Pass

€ 24€ adults, 12€ children | Summer Outdoor 12€ adults, 6€ children



SELLARONDA MTB TOUR with MTB instructors (from 23/06 to 22/09) World famous panoramic tour around the majestic Sella Group, right in the heart of the Dolomites, UNESCO World Heritage. We will ascend by using the lifts and ride across Gardena, Campolongo, Pordoi and Sella Pass. Exciting single tracks, breathtaking descents and unique mountain landscapes are waiting for you!

🕒 8.30 - 16.30 about ⬆️ 450 m ⬆️ 3730 ➡️ 58 km Difficulty: ★★★★★



📍 8.30 Sport Check Point Canazei

€ 45€ adults | Summer Outdoor and Bike Hotel 20€



Saturday



LATEMAR LABYRINTH TRAIL and LAKE CAREZZA

with Territorial Guides (from 02/06 to 29/09)

Through the green meadows of Costalunga Pass, we will reach the so-called Latemar Labyrinth. The labyrinth is a path between rocks and tunnels that leads to the spectacular rainbow lake.

🕒 9.30 - 15.30 ⬆️ 350 m Difficulty: ★★★★★



👤 10 +

📍 9.30 Passo Costalunga by Golf Hotel parking (SAD bus stop)

€ 34€ adults, 17€ children | Summer Outdoor 20€ adults, 10€ children



DOLO-MYTHICAL ADVENTURE! with the Mountain Guides

(from 02/06 to 29/09)

Touch the water of the waterfalls between easy rock climbing passages, equipped sections and adrenaline abseiling. For an unforgettable day accompanied by our Mountain Guides in the heart of the Dolomite rock.

🕒 9.00 - 15.00 about ⬆️ 250 m Difficulty: ★★★★★



👤 h 1.40m

📍 9.00 Pian de Schiavaneis Restaurant parking lot

€ 100€ | Summer Outdoor 70€



“SENTIERI DI PACE” THE GREAT WAR AND THE AUSTRIAN GUNNER

with Territorial Guides (from 17/06 to 16/09)

Visit the Austrian gunboats, the trenches of the First World War and the Observatory in the Colvere Alpe di Lusia area. Return to Chalet Valbona refuge for lunch and a well-deserved relaxation on the beautiful panoramic terrace.

🕒 8.30 - 12.30 about ⬆️ 150m Difficulty: ★★☆☆☆



👤 8 +

📍 8.30 am departure of Alpe Lusia lift in Moena (Ronchi)

€ 28€ adults, 20€ children (8-16 years)

Sunday



CROSSING CATINACCIO with Territorial Guides (from 11/06 to 17/09)

Spectacular and easy walk at high altitude in the Catinaccio Group, from Roda di Vael to Ciampedie. Overcoming the major uphill and downhill gradients with the lifts, we will cross the magical kingdom of King Laurino among history, legends and incomparable views.



⌚ 8.45 - 16.00

↑ 400 m

↓ 500 m

Difficulty: ★★☆☆☆

👤 10 +

📍 8.45 Vajolet chairlift station in Pera di Fassa, departure by private shuttle bus.

€ 34€ adults, 17€ children | Summer Outdoor 20€ adults, 10€ children



SUNSET EXCURSION WITH DINNER AT THE MOUNTAIN HUT

with Territorial Guides (from 04/06 to 24/09)

Live the mountain at night too! Evening excursion in the magic atmosphere of the Dolomites' sunset. You will enjoy a delicious traditional dinner in a Refuge and come back equipped with torches under a beautiful starry sky.



⌚ 16.30 - 21.30

↕ 400 m

Difficulty: ★★☆☆☆

👤 10 +

📍 16.30 Scuola Sci Campitello

€ 60€ adults, 45€ children | Summer Outdoor 45€ adults, 35€ children. (Dinner included)



SASSOLUNGO TOUR on E-BIKE with MTB instructors (from 07/06 to 04/10)

On an e-bike around the magnificent Sassolungo massif. We will first reach Col Rodella by cable car and from there we will ride through the "City of rocks", we will reach Monte Pana and then climb the Duron pass to descend through the homonymous valley.



⌚ 8.30 - 15.00

↑ 700 m

↓ 1300 m

→ 36 km

Difficulty: ★★☆☆☆

📍 8.30 Sport Check Point Canazei / 8.45 Col Rodella cable car station in Campitello

€ 45€ | 25€ Summer Outdoor



Legend

⌚ Duration	Difficulty level scale:
📍 Meeting point	★☆☆☆☆ For everyone: short activities with minimum elevation gain or flat, suitable for everyone, even for children.
€ Cost	★★☆☆☆ Easy: first level excursions with a limited elevation gain and wide paths. Trekking shoes are required
↕ Elevation gain	★★★☆☆ Intermediate/Easy: excursions for those with a bit of trekking experience, elevation gain up to 400 m.
👤 Minimum age	★★★★★ Intermediate: require several hours of walking/biking, with a more important elevation gain up to 700 m
	★★★★★ Intermediate/Difficult: decidedly more demanding excursions for those who like to walk in the mountains, who want to do challenging hikes from 700 to 1000 m and walk up to 6/8 hours.

Terms of participation

- Booking must be done within 6.00 pm of the day before the activity.
- FREE cancellation within 48 hours of the start of the activity. Loss of the deposit (50%) for cancellations within 24 hours of the activity. No refunds for cancellations in the 24 hours prior to the departure of the activity.
- The program may vary according to weather conditions. In the event of storms or adverse weather, the activities can be postponed or canceled.
- In case of cancellation by the organization, the fee will be totally refunded.
- Hiking boots or shoes with sculpted soles are required for all excursions (no sneakers). The helmet is compulsory for bike activities.
- Lifts, buses, shuttles, meals and MTB/E-Bike rental are never included in the price, unless otherwise specified.
- The reduced price is guaranteed exclusively to Summer Outdoor facilities' guests.
- Activities are confirmed only with a minimum number of participants that varies for each activity.

More info by scanning the QR codes.

Info e booking



Every day from 9.00 to 12.00 and from 16.00 to 19.00
at our Sport Check Points or ONLINE →

- Canazei: tel. +39 0462 870997 o Whatsapp +39 340 1147382
- Campitello: tel. +39 0462 750490
- Vigo: tel. +39 0462 763125
- Pozza: tel. e Whatsapp +39 331 2989721
- Moena: tel. +39 0462 573770

info@fassasport.com - www.fassasport.com

